

RDY

NO. OF PLOTS = 5 (4 RA) + 1 (1 RA)  
 PERCENT MEASUREMENT = 5% (10% IN AREA OF EACH PLOT)  
 TOTAL PERCENTAGE ON ALL PLOTS = 45%  
 NO. OF STORIES = 2, 3, 4, 5

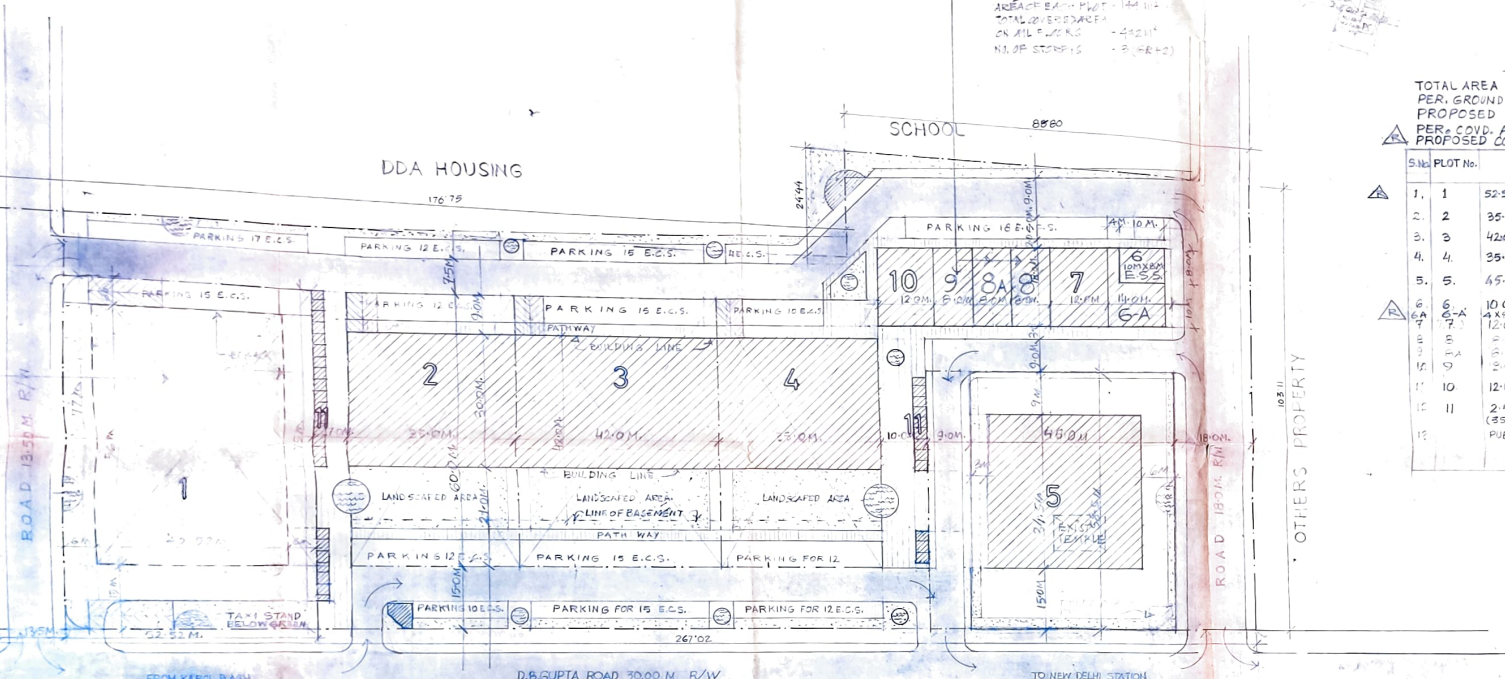
TOTAL AREA OF COMMUNITY CENTRE = 25902.70 SQ.M.  
 PER. GROUND COV. @ 25% = 6475.67 SQ.M.  
 PROPOSED GR. COV. = 6431.75 SQ.M. (21.0%)  
 PER. COVD. AREA ON ALL FLOORS = 25902.70  
 PROPOSED COVD. AREA ON ALL FLOORS = 25902.70 SQ.M.

DDA HOUSING

SCHOOL 8880

S/N	PLOT No.	SIZE	AREA OF PLOT	AREA OF BASEMENT	PER. GR. COVERAGE	TOTAL LONG. AREA ON ALL FLOORS	HEIGHT	NO. OF STORIES	USE
1.	1	52.52x75.00	3932.00	283372.00	1800.00	10745.95	25 MTS	8(6+2)	HOTEL
2.	2	35.0x60.0	2100.00	1470.00	630.00	2520.00	15 MTS	4(6+2)	COMM.
3.	3	42.0x60.0	2520.00	1764.00	756.00	3024.00	15 MTS	4(6+2)	COMM.
4.	4	35.0x60.0	2100.00	1470.00	630.00	2520.00	15 MTS	4(6+2)	COMM.
5.	5	45.0x59.50	2647.50	1853.25	1242.00	5427.00	26 MTS	6(4+2)	MULTI-STOREY
6.	6	10.0x8.0	80.00	56.00	28.00	112.00	12 MTS	3(6+2)	COMM.
7.	7	4.0x4.0	16.00	11.20	5.60	22.40	12 MTS	3(6+2)	COMM.
8.	8	4.0x4.0	16.00	11.20	5.60	22.40	12 MTS	3(6+2)	COMM.
9.	9	4.0x4.0	16.00	11.20	5.60	22.40	12 MTS	3(6+2)	COMM.
10.	10	12.0x18.0	216.00	151.20	75.60	302.40	12 MTS	3(6+2)	COMM.
11.	11	2.5x2.5	6.25	4.375	2.1875	8.75	12 MTS	3(6+2)	COMM.
12.	12	2.5x2.5	6.25	4.375	2.1875	8.75	12 MTS	3(6+2)	COMM.
13.	13	PUBLIC FACILITIES			40.00	40.00			

PARKING DETAILS  
 REQ. PARKING @ 1/6 E.C.S. PER 100 SQ.M. = 470 E.C.S.  
 PROPOSED PARKING = 492 E.C.S.  
 PLOT No. 1: 117 E.C.S.  
 PLOT No. 2: 98 E.C.S.  
 PLOT No. 3: 98 E.C.S.  
 PLOT No. 4: 98 E.C.S.  
 PLOT No. 5: 102 E.C.S.  
 PLOT No. 6: 117 E.C.S.  
 PLOT No. 7: 98 E.C.S.  
 PLOT No. 8: 98 E.C.S.  
 PLOT No. 9: 98 E.C.S.  
 PLOT No. 10: 102 E.C.S.  
 PLOT No. 11: 117 E.C.S.  
 PLOT No. 12: 98 E.C.S.  
 PLOT No. 13: 117 E.C.S.  
 SHORT TERM SURFACE PARKING = 194 E.C.S.



NOTE:  
 1. APPROVED BY VICE CHAIRMAN OF DDA ON 09.08.2006  
 2. APPROVED BY CHIEF ENGINEER OF DDA ON 09.08.2006 IN THE NO. SAINTS/100/06/264/2006  
 3. ALL THE WORKS ON THE SITE SHALL BE COMPLETED WITHIN 18 MONTHS FROM THE DATE OF COMMENCEMENT OF WORK.

NOTE (DATE: 30-01-06)  
 THE MODIFICATION IN THE LAYOUT PLAN INCORPORATED AS PER REVISED LAYOUT PLAN APPROVED BY 24TH SCREENING COMMITTEE HELD ON 16-12-05 VIDE ITRM NO. 131/2005. THESE REVISIONS WERE PROPOSED BECAUSE OF REDUCED SIZE OF E.C.S. REQUIREMENT AS PER LETTER NO. F. (3) 2005/100/05/1230 DATED 08.07.05 & DECLARATION FOUND IN AREA STATEMENT OF THE SCHEME. THESE REVISIONS ARE SHOWN AS  $\Delta$  AND INCORPORATED IN PLOT NO. 1696A

NOTE (DATE: 30.01.06)  
 THE GROUND COVERAGE OF PLOT NO. 1 (HOTEL) HAS BEEN REVISED FROM 1575 SQ.M. TO 1800 SQ.M. AND THE OVERALL GROUND COVERAGE FROM 4.27% TO 6.43% AS APPROVED BY C.A. IN T.L.B. NO. 2/N/100/05/1230 DATED 27.02.2006.

COMMUNITY CENTRE AT MOTIA KHAN  
 LAYOUT PLAN  
 SCALE: 1:500

AP. 11.40.2007	ASST. CH. ENGR.	AP. 11.40.2007	CH. ENGR.
SR. ASST. CH. ENGR.	CH. ENGR.	SR. ASST. CH. ENGR.	CH. ENGR.

COMMUNITY CENTRE AT MOTIAKHAN